

Pigeon Point Neighborhood News

www.pigeonpoint.org

Email: pigeonpointcouncil@comcast.net

Council Chair: Matt Swenson (938-0161)
Secretary: Sharon Price (935-1532)

Activities: Pete Spalding (933-6587)
Treasurer: Kerry Hughes (933-6587)

Communications: Raeann Patton (550-2690)
Signage Master: Paula Bamburg (937-1753)

Next Event: Tuesday, 8/7, from 6 - 8:30 PM @ 20th & Dakota

August 7 Agenda Items:

- City Night Out

City Night Out



Join us on Tuesday, August 7th, in the 4100 block of 20th Ave SW from 6 - 8:30 p.m., to eat, drink, and mingle with your neighbors for our annual City Night Out, a national Crime Prevention event.

The Pigeon Point Neighborhood Council will provide paper plates, utensils, assorted soft drinks and a grill. You bring delicious food suitable for sharing with your neighbors, and chairs to sit on. As soon as there's a crowd, we'll start the grill.

If you've lived in the neighborhood for a while, and haven't ever attended this event, you should come out -- it's a great time, and lots of fun to meet a large group of neighbors. We hope to have a visit from the Fire Department and possibly some Seattle City Council members. And, there'll be fun activities for the kids, and music for the adults to enjoy. Don't miss this fun Pigeon Point summertime tradition.

In this issue:

City Night Out	1
Duwamish Longhouse Development	1
Picnic at the Precinct	2
Who To Call	2
Free Trees Available	2
Tree Trimming Recap	2

Duwamish Longhouse Development

~Excerpted from the West Seattle Herald

Construction of the Duwamish Longhouse and Cultural Center is scheduled to begin in August in the 4700 block of W. Marginal Way on property the tribe owns. The longhouse will consist of a main room large enough for 200 people, and exhibition space to display Duwamish artifacts and contemporary Indian art.



An integral part of the center's design will be "House posts", cedar logs representing the tribe's main families. The Duwamish Tribe has no reservation and isn't recognized by the U.S. government, and they hope the longhouse will help re-establish Duwamish culture in Seattle.

Numerous foundations have helped the tribe raise 90% of the \$3 million the new facility is expected to cost. Contributors include the Friends of the Duwamish, the Gates Foundation, the Paul Allen Family Foundation, The City of Seattle, and the state of Washington.

Do you mow lawns, babysit, or maybe walk dogs, and want your neighbors to know about it? Email us your name & phone number to pigeonpoint-council@comcast.net, and we'll publish the information on our website and in an upcoming newsletter.

How's that for free advertising?!

August 2007



Picnic at the Southwest Precinct is August 18, 2007 from 1-4 pm!

All Southwest Precinct community members are invited to 2300 SW Webster St. to enjoy a day of dancing, music, food, magic, balloons, raffles! Meet your local officers, SWAT and other specialty units and get a chance to take a precinct tour!

Free Trees Available

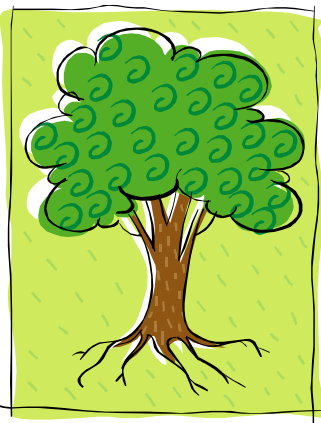
This fall, the Department of Neighborhoods will be providing free trees for planting on residential streets in Seattle neighborhoods. Applications are accepted from groups of neighbors and are due on Friday, August 10, 2007.

In exchange for the free trees delivered by the City, groups of neighbors attend a City-sponsored training session and then organize their neighbors to plant the trees. The goal is to beautify Seattle streets and to support a clean and green environment. Seattle's tree cover has shrunk to just 18%. You can make a difference.

Groups of five households or more on a street or block can apply for a minimum of 10 and a maximum of 40 trees per project.

Contact the Seattle Department of Neighborhoods, 684-0464, or visit www.seattle.gov/neighborhoods/nmf/treefund.htm for an application.

Tree-Trimming Recap



At the last neighborhood council meeting, a City of Seattle Department of Planning & Development (DPD) spokesman offered advice on tree-trimming. Our neighborhood is rapidly developing so, what are the City's tree trimming or removal rules? Here are key points to remember:

- Rules are VERY different based on whether a tree is in an Environmentally Critical Area (ECA). To find out if a tree is located in an ECA, call DPD or visit www.seattle.gov/dpd/research.
- If a tree is not in an ECA, it may be removed unless it is an "exceptional tree", meaning it has special value. For a document listing exceptional trees, call DPD, or Matt at 853-1585. Developers of new construction are also required to file plans describing how they will keep existing trees or plant new trees if existing trees are cut.

- If a tree is in an ECA, it cannot be cut down without approval from DPD, and pruning of these trees are highly regulated. Even if approved, trees in ECAs cannot be cut down between November and March without special permission.
- "Hazard trees" in ECAs may be cut down by a professional with approval from DPD. These trees must be at high risk of falling down and be endangering a nearby target (such as a house) which can't be moved.

If you see potential illegal tree trimming or cutting take place, check with the property owner first! It may be perfectly legal. If you're still troubled, call DPD's Violation Complaint Line at (206) 615-0808, and provide the violating property's exact address. Calls are confidential.

Who to Call Citizens Information Guide phone listings. All numbers are (206) area code, unless otherwise noted. Any phone numbers not listed here can be found at 684-CITY or www.seattle.gov.

Who to Call	Police, Fire, Medic One	911
	Non-Emergency	625-5011
	Mayor Greg Nickels	684-4000
	Street Repair	386-1218
	Animal Control	386-7387

Vehicles	
Abandoned (public)	684-8763
Inoperative (private)	684-7899
Permit & Land Use	684-8850
Clean & Green Seattle	386-9765

Drug Activity	
In progress	911
On-going	684-5797
Emergency Prep.	233-7123
Graffiti	684-7587
West Seattle Neighborhood Services Center	684-7495
Noise Abatement	684-7843
Illegal Parking	625-5011
Weed Overgrowth	684-7899
Broken Sidewalks	684-7623
Sidewalk Questions	684-8733

